

# T5.09 Character Generation – Career: Marine

p66 (unless otherwise noted)

- To begin career:
- NOTC (Officer rank 1)
  - Navy Academy (Officer rank 1)
  - or 2D <= C1 (Enlisted rank 1)

**Marine Unit**  
Roll 1D on table 12 of p76

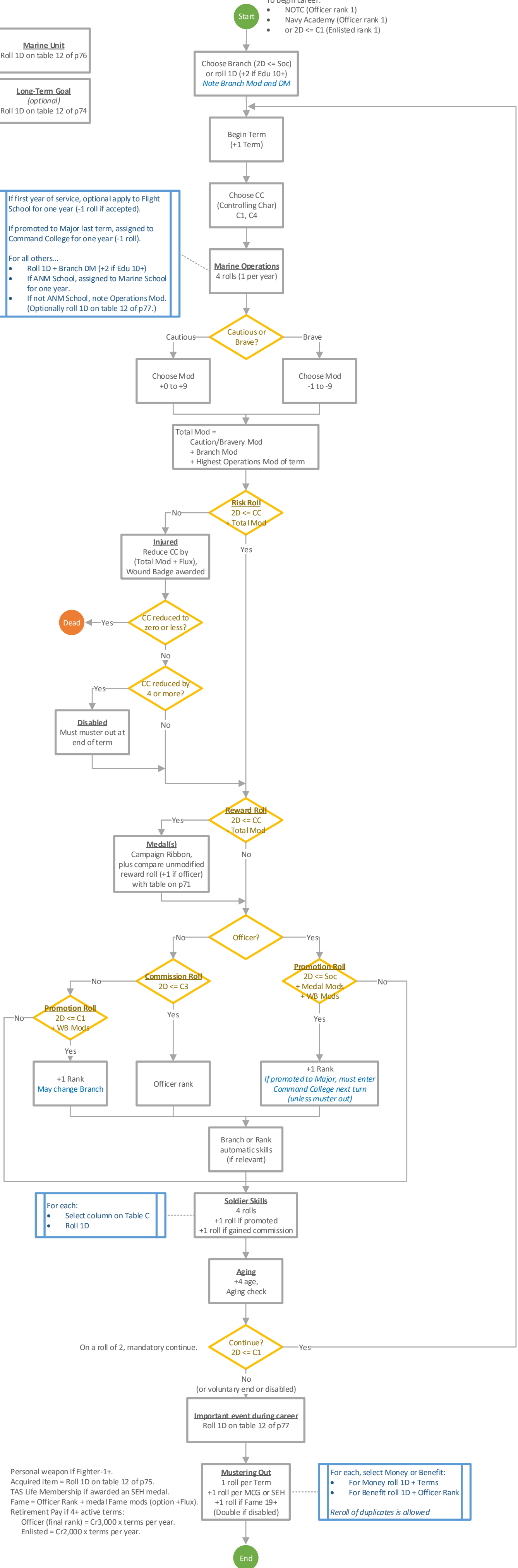
**Long-Term Goal**  
(optional)  
Roll 1D on table 12 of p74

If first year of service, optional apply to Flight School for one year (-1 roll if accepted).

If promoted to Major last term, assigned to Command College for one year (-1 roll).

For all others...

- Roll 1D + Branch DM (+2 if Edu 10+)
- If ANM School, assigned to Marine School for one year.
- If not ANM School, note Operations Mod. (Optionally roll 1D on table 12 of p77.)



- Personal weapon if Fighter-1+.
- Acquired item = Roll 1D on table 12 of p75.
- TAS Life Membership if awarded an SEH medal.
- Fame = Officer Rank + medal Fame mods (option +Flux).
- Retirement Pay if 4+ active terms:  
Officer (final rank) = Cr3,000 x terms per year.  
Enlisted = Cr2,000 x terms per year.

For each, select Money or Benefit:

- For Money roll 1D + Terms
- For Benefit roll 1D + Officer Rank

*Reroll of duplicates is allowed*