

# T5.10 Character Generation – Career: Marine

p86 (unless otherwise noted)

To begin career:

- NOTC (Officer rank 1)
- Navy Academy (Officer rank 1)
- or 2D <= C1 (Enlisted rank 1)

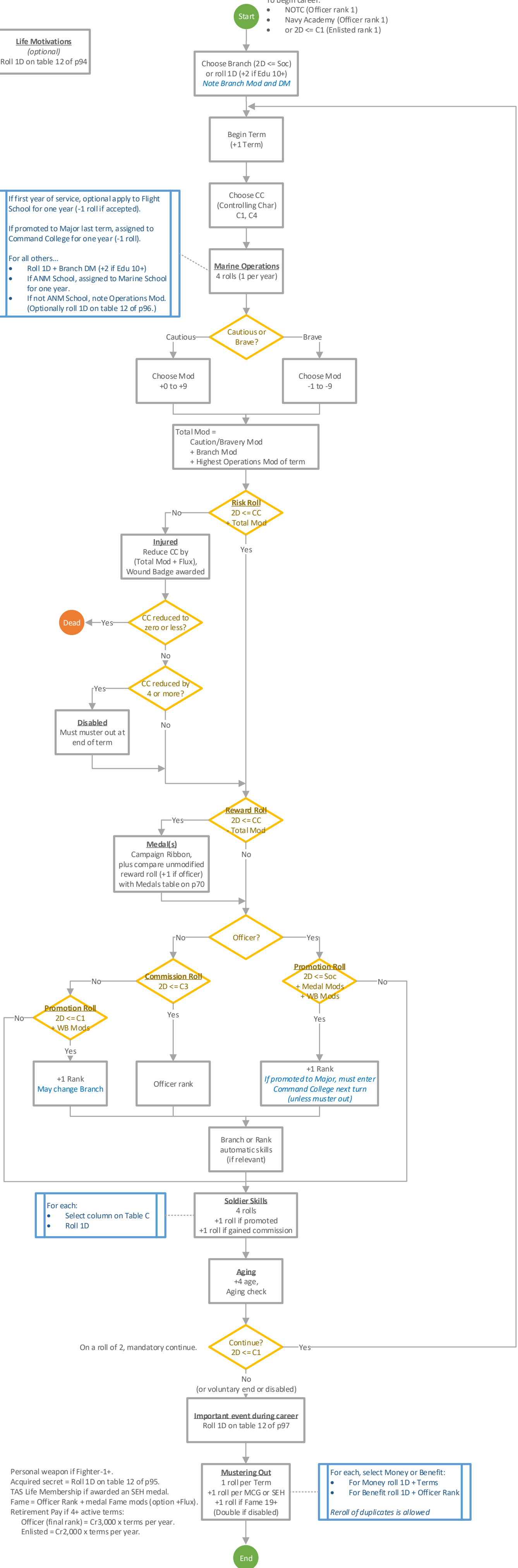
**Life Motivations**  
(optional)  
Roll 1D on table 12 of p94

If first year of service, optional apply to Flight School for one year (-1 roll if accepted).

If promoted to Major last term, assigned to Command College for one year (-1 roll).

For all others...

- Roll 1D + Branch DM (+2 if Edu 10+)
- If ANM School, assigned to Marine School for one year.
- If not ANM School, note Operations Mod. (Optionally roll 1D on table 12 of p96.)



- Personal weapon if Fighter-1+.
- Acquired secret = Roll 1D on table 12 of p95.
- TAS Life Membership if awarded an SEH medal.
- Fame = Officer Rank + medal Fame mods (option +Flux).
- Retirement Pay if 4+ active terms:  
Officer (final rank) = Cr3,000 x terms per year.  
Enlisted = Cr2,000 x terms per year.

For each, select Money or Benefit:

- For Money roll 1D + Terms
- For Benefit roll 1D + Officer Rank

*Reroll of duplicates is allowed*